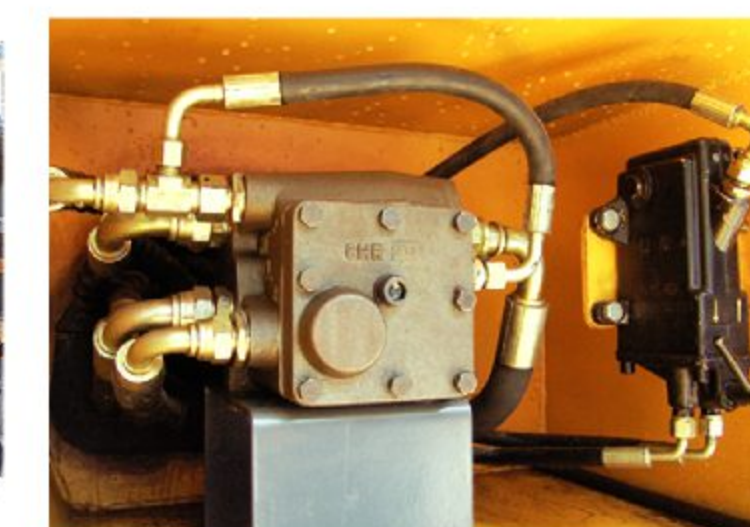
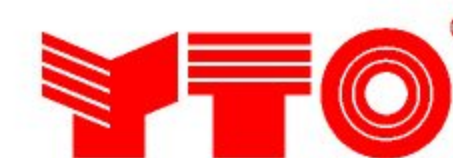


Refuse Compactors

LLC228/LLC226/LLC223/LLC220/LLC233H/LLC230H



The refuse compactors are essential equipments for refuse landfill site. It has the functions of pushing, spreading, pulverizing demolishing and compacting the refuse. Using this refuse compactor will help to save the land, protect the environmental and extend the operating life of the refuse landfill site.

- Torque converter and power gearshift transmission for LLC228, LLC226, LLC223, LLC220. Static-hydraulic independently drive each of four wheels(for LLC230H, LLC233H).
- The high wear life teeth are arranged specially, two scraper bars and two wire cutters on four compaction wheels will avoid the wire wrap-around and keep the wheel clean.
- Hydraulic system is driven by a piston pump with load sensing system, provides smooth and light control, high efficiency and energy economy.
- The Roll-Over Protective Structure (ROPS) as an integral part of the frame.
- Service brakes on the front and rear axles and central parking brake will guarantee most reliable safety for LLC228, LLC226, LLC223, LLC220. Travelling brake for LLC233H, LLC230H is static-hydraulic brake engage to each wheel, each hub reducer equipped with SAHR brake.
- Infrared vehicle video monitor system and backup buzzer are greatly convenient for driver's travel and working with more safe in increased rear view.
- Standard equipped with Chinese engine, CUMMINS is optional for LLC233H&LLC230H.

Model		LLC228	LLC226	LLC223	LLC220	LLC233H	LLC230H
Operating mass	kg	28000	26000	23000	20000	33000	30000
Rolling width	mm	3430	3430	2910	2910	3630	3630
Max. travel speed	km/h	10.9	10.9	10	10	8	8
Gradeability	%	100	100	100	100	100	100
Dozer blade height x width	mm	1880 x 3800	1880 x 3800	1650 x 3000	1650x3000	1980 x 4000	1980 x 4000
Wheelbase	mm	3500	3500	3350	3350	3500	3500
Ground Clearance	mm	490	490	435	435	610	610
Wheel width	mm	1195/970	1195/970	1040/835	1040/835	1350/1130	1350/1130
Wheel diameter (front / rear)	mm	1620/1620	1620/1620	1500/1500	1500/1500	1620/1620	1620/1620
Teeth quantity per wheel (front / rear)	mm	50/40	50/40	50/40	50/40	60/50	60/50
Diesel engine model		C6121	C6121	D6114/ C6121	D6114	QSM11/WP12N	QSM11/WP12N
Diesel engine power	kW	187	187	147/187	147	250/276	250/276
Overall dimensions (from dozer blade)	mm	8150 x 3800 x 3650	8150 x 3800 x 3650	7355 x 3000 x 3600	7355 x 3000 x 3590	8250 x 4000 x 3750	8250 x 4000 x 3750
Overall dimensions (from front wheel)	mm	8150 x 3430 x 3650	8150 x 3430 x 3650	7355 x 2910 x 3600	7355 x 2910 x 3590	8250 x 3630 x 3750	8250 x 3630 x 3750